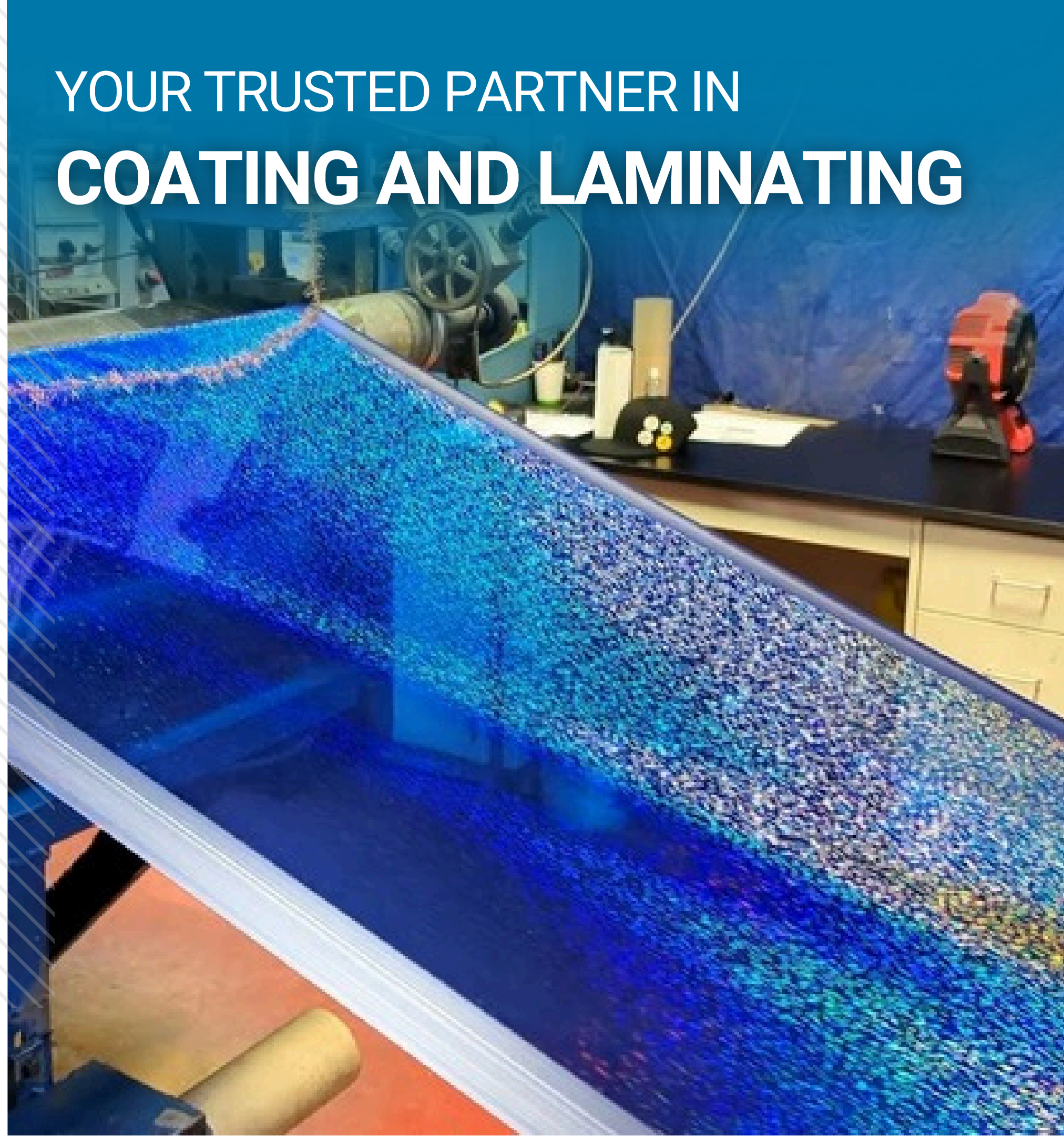


- Full Coating & Laminating Line Drives and PLC Upgrades
- Controls for Machine Sections
 - Unwinds (plus conversions from braked to motorized)
 - Coating Sections
 - Gravure
 - Reverse Roll
 - Slot Die
 - Hot Melt
- Cast Film Lines / Extrusion
- Laminator Sections
- Oven / Dryer Rolls and Blowers
- Cooling / Chill Rolls
- Nips
- S-Wraps
- Slitters
- Accumulators
- Rewinds
 - Log Winders
 - Turret Winders with Automatic Splice
 - Robotic Winders
 - Surface Winders

YOUR TRUSTED PARTNER IN **COATING AND LAMINATING**



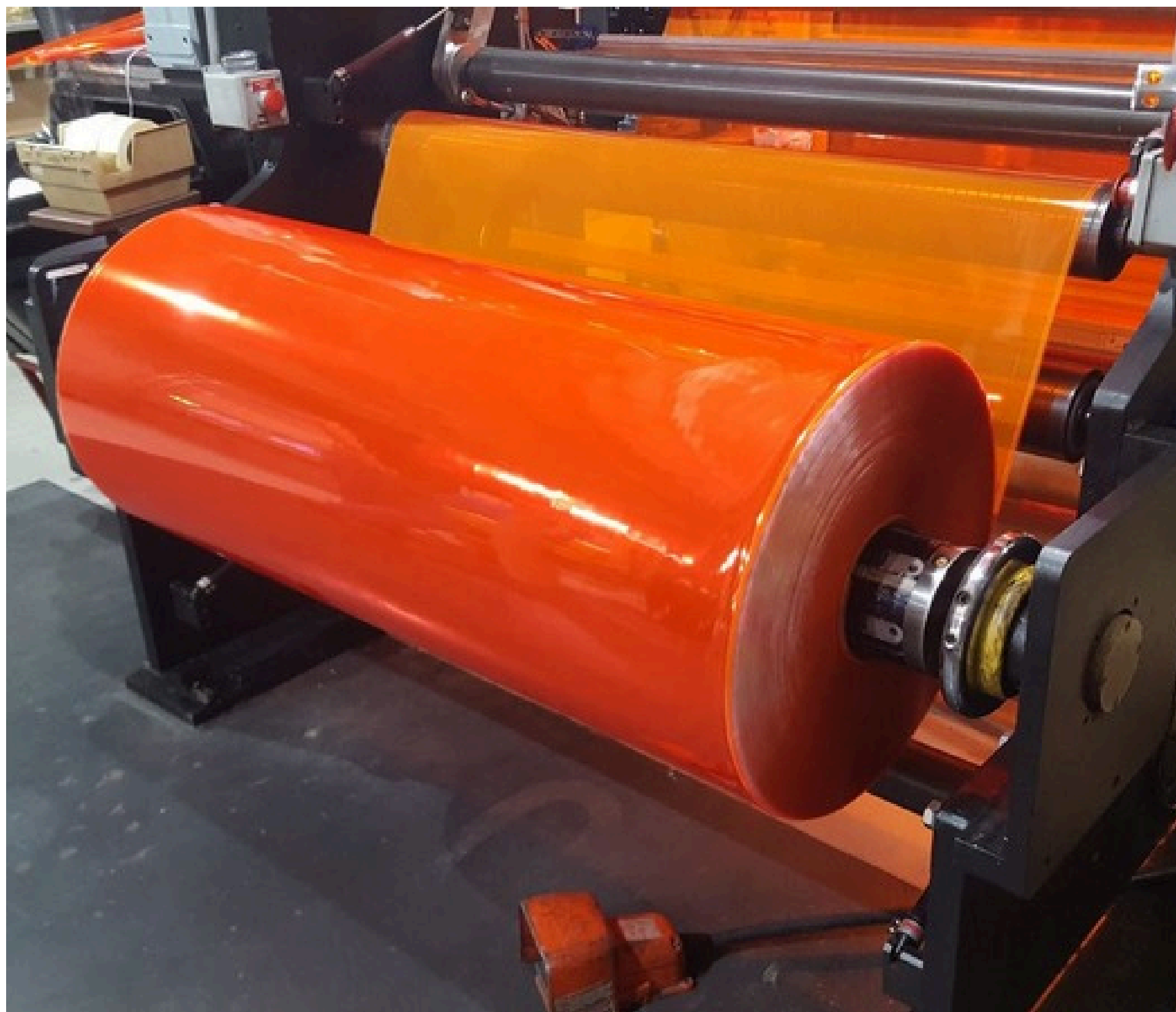
- Full Coating & Laminating Line Drives and PLC Upgrades
 - Other Components / Sections
 - Edge Guides
 - Meyer Rods
 - Purge Systems
 - Release / Interleaf Paper Winders/Unwinds
 - Universal Shafts
 - XP Motors and Controls
- Applications / Specialties
 - Line Speed / Tension / HP Increase
 - Taper Tension
 - Addition of Tension Zones
 - PID Control
 - Temperature Control
 - Conversion of individual TCUs to PLC/HMI control with Recipes

YOUR TRUSTED PARTNER IN COATING AND LAMINATING



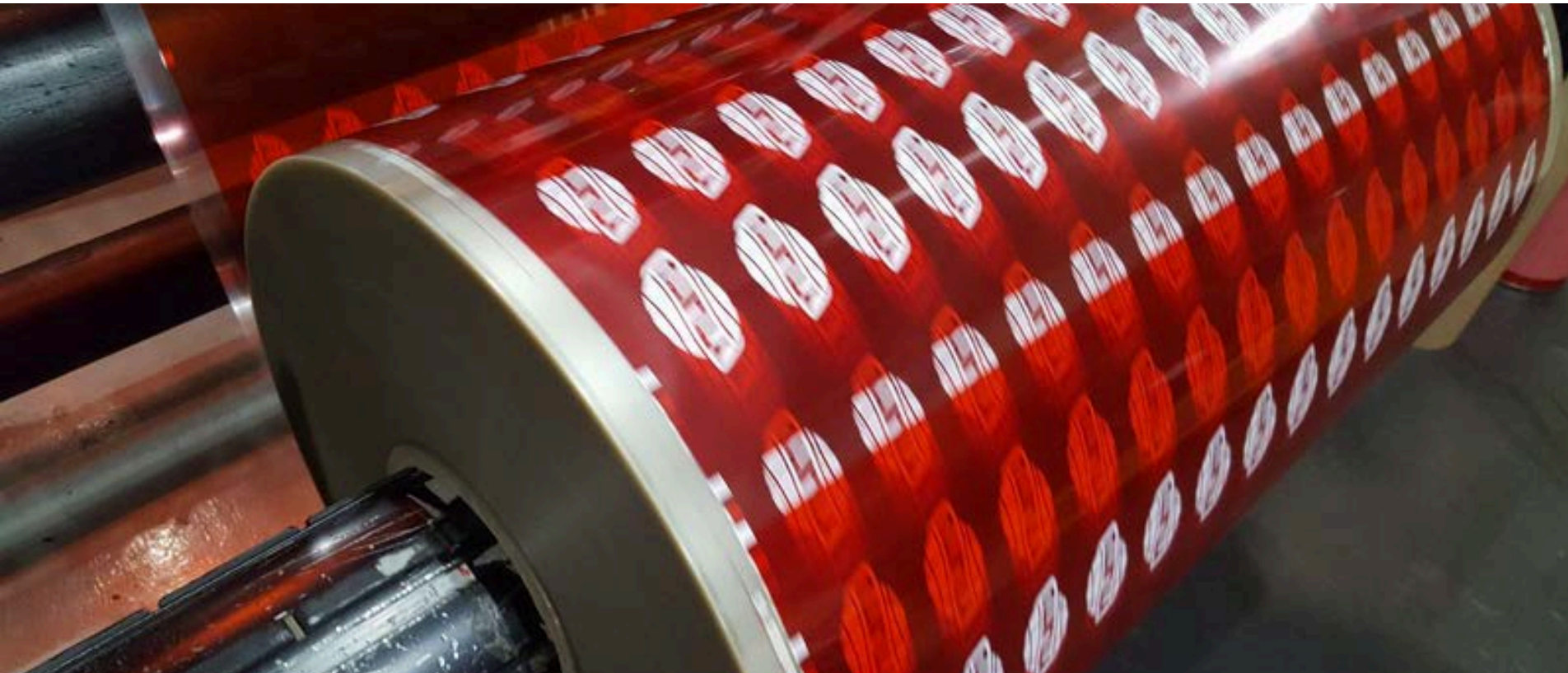


SPECIALIZING IN
UNWINDS





SPECIALIZING IN
REWINDS





SPECIALIZING IN LINE SHAFT AND MOTOR CONVERSIONS

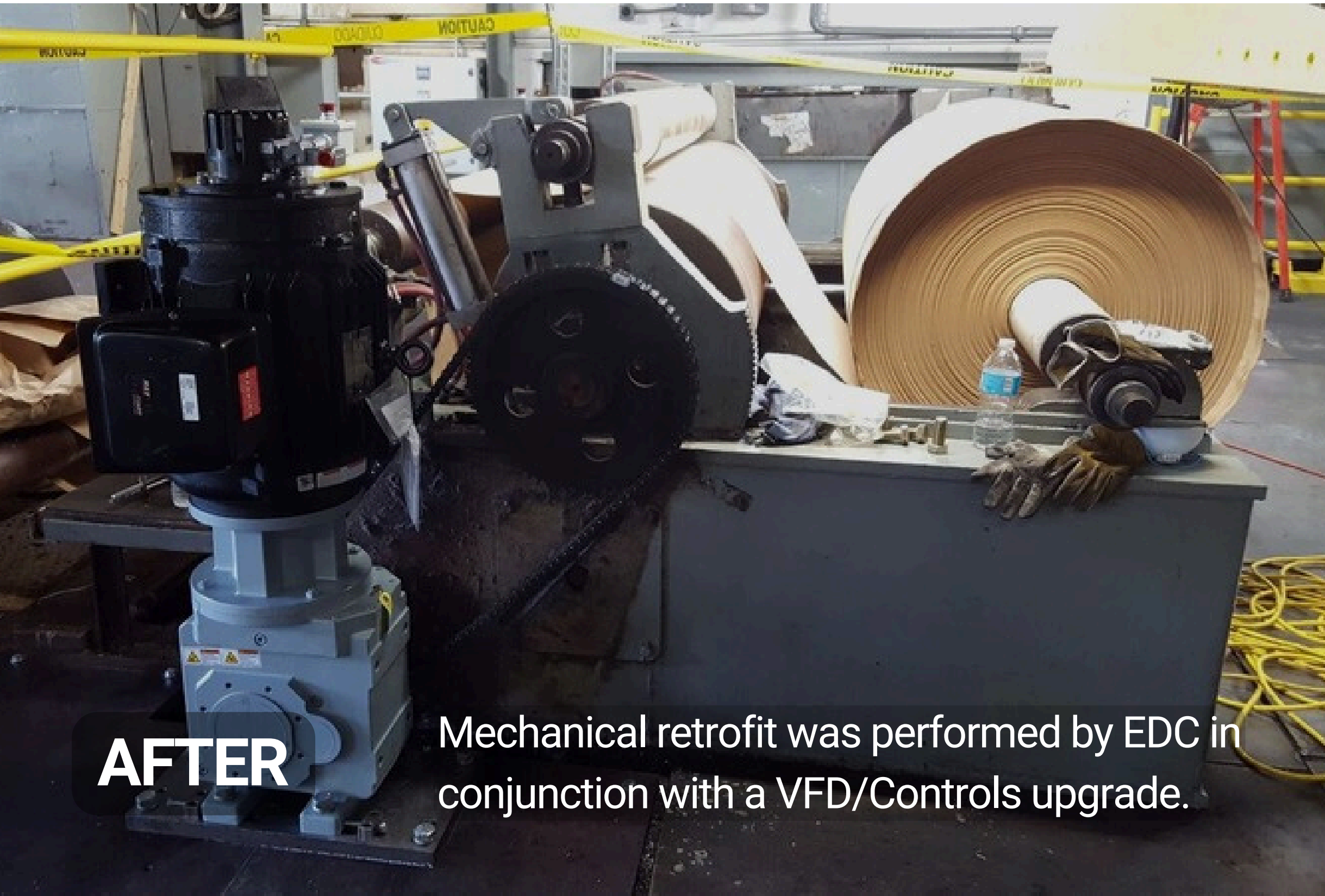


BEFORE

EDC separated this roll from a line shaft so it could be independently driven.



SPECIALIZING IN LINE SHAFT AND MOTOR CONVERSIONS



AFTER

Mechanical retrofit was performed by EDC in conjunction with a VFD/Controls upgrade.



Highlighting new Motor, Gearbox and modified steel plate and mounting



SPECIALIZING IN REWIND EMBEDDED OEM DC MOTOR



BEFORE

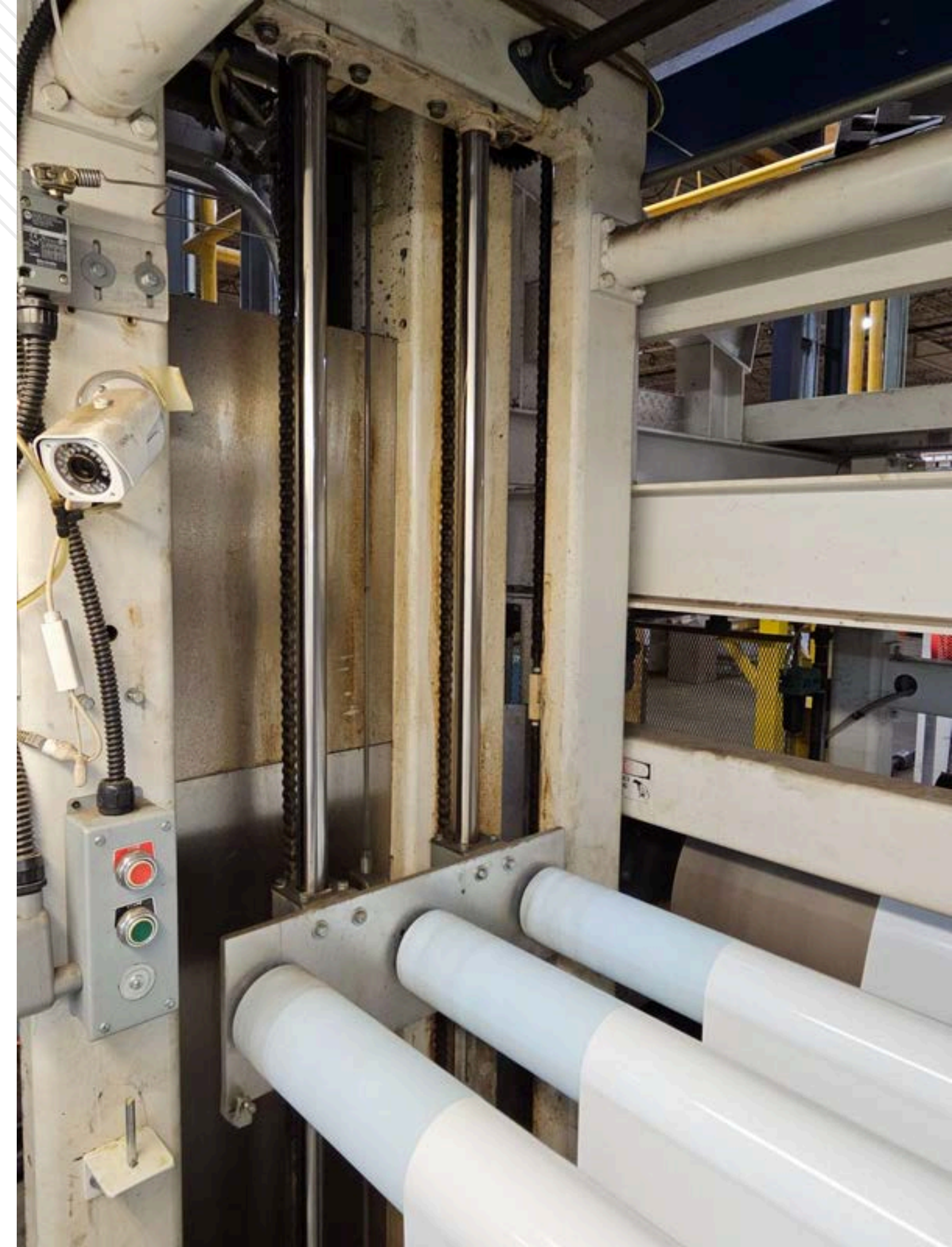


REWIND WITH AC VECTOR MOTOR AND
INTERNAL PLANETARY GEARBOX
RETROFITTED

AFTER



SPECIALIZING IN ACCUMULATORS





SPECIALIZING IN **SLITTING**





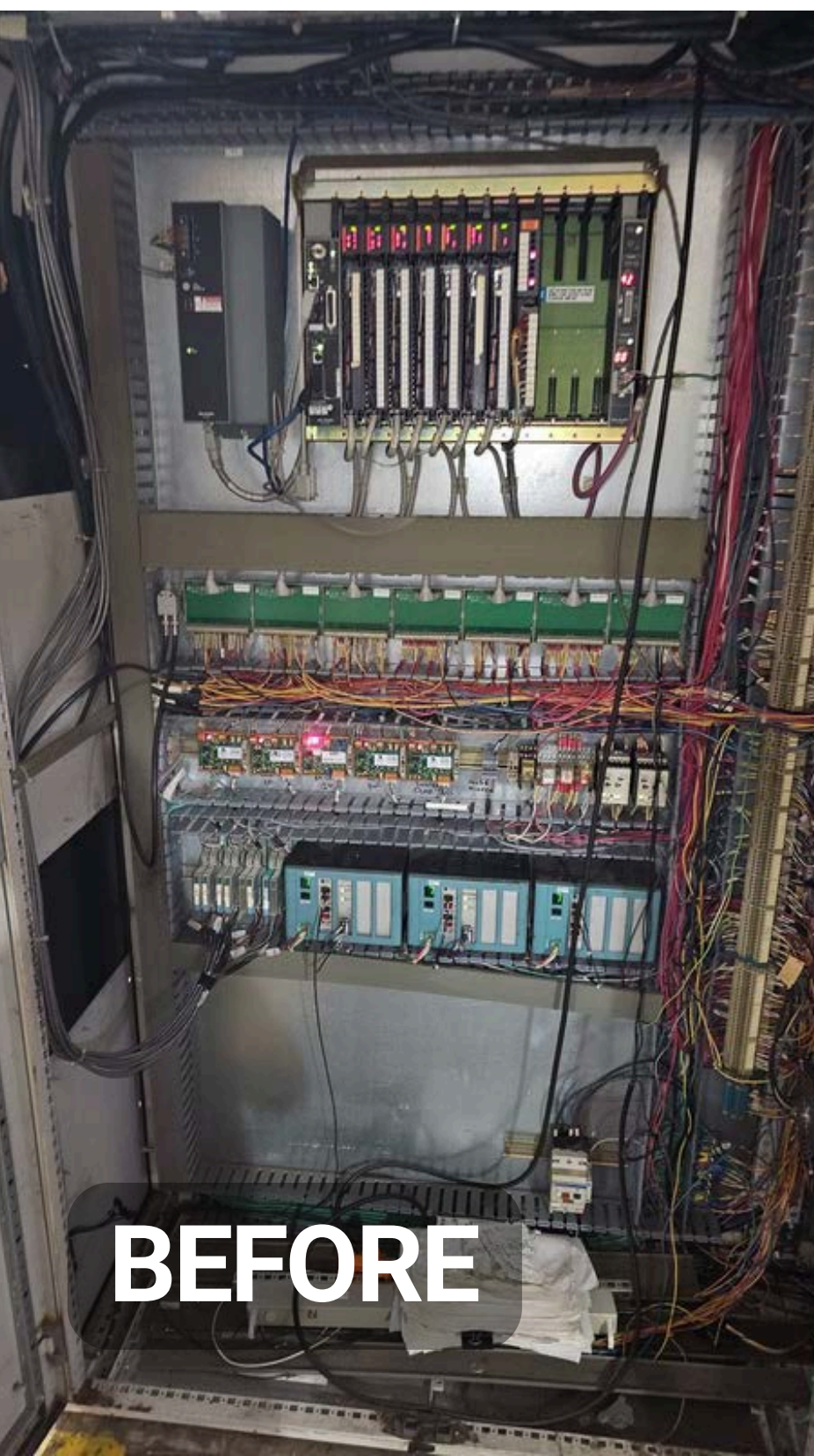
PROJECT FILM COATING LINE UPGRADE

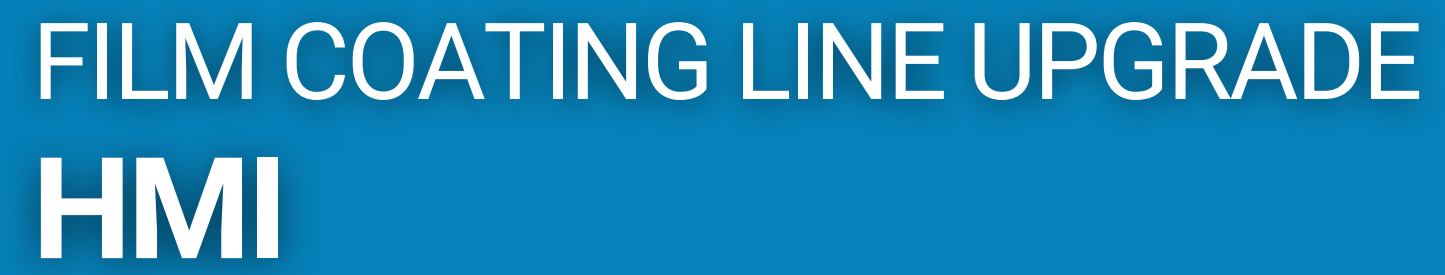
- Converted Allen-Bradley PLC5 to ControlLogix
- Upgraded 28 Vector Drives
- Changed PLC5 Remote I/O to Rockwell 1734 Point I/O
- Created Ethernet I/P network for PLC, drives, I/O, HMIs and connection to plant network
- Removed and replaced control panels onsite
- Upgrade of Robotic Winder with Autosplice feature





FILM COATING LINE UPGRADE PLC & TYPICAL DRIVE ENCLOSURE

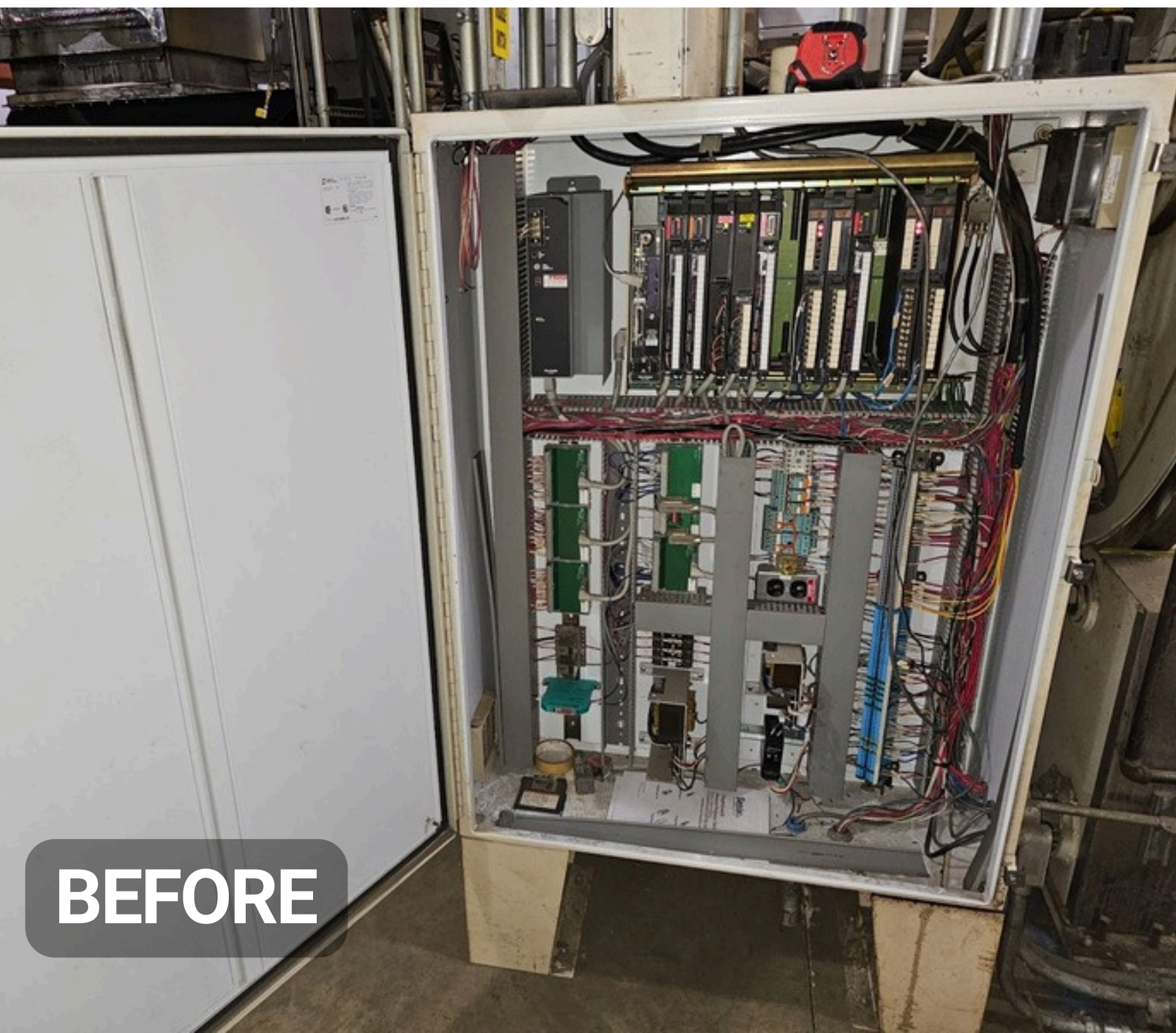




TAPE TEST



FILM COATING LINE UPGRADE WINDER CONTROLS ENCLOSURE



BEFORE

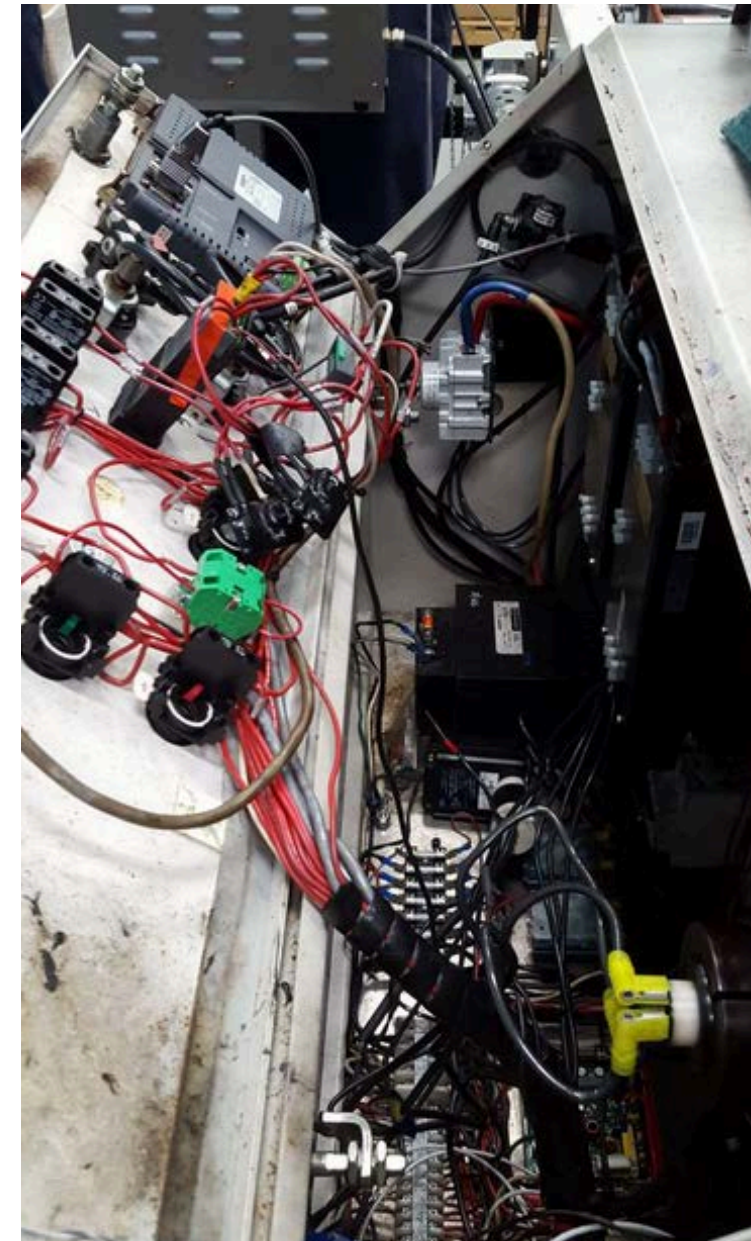


AFTER



LAMINATOR UPGRADE PROJECT BEFORE

- Replacement of custom desk-style console with meters, knobs and dials with new desktop enclosure with HMI and clean, user-friendly layout
- PLCs and servo drives enclosed in desktop enclosure
- PLC-based temperate control replaced individual controllers
- Improved winding with diameter calculator and tension control algorithms





LAMINATOR UPGRADE AFTER



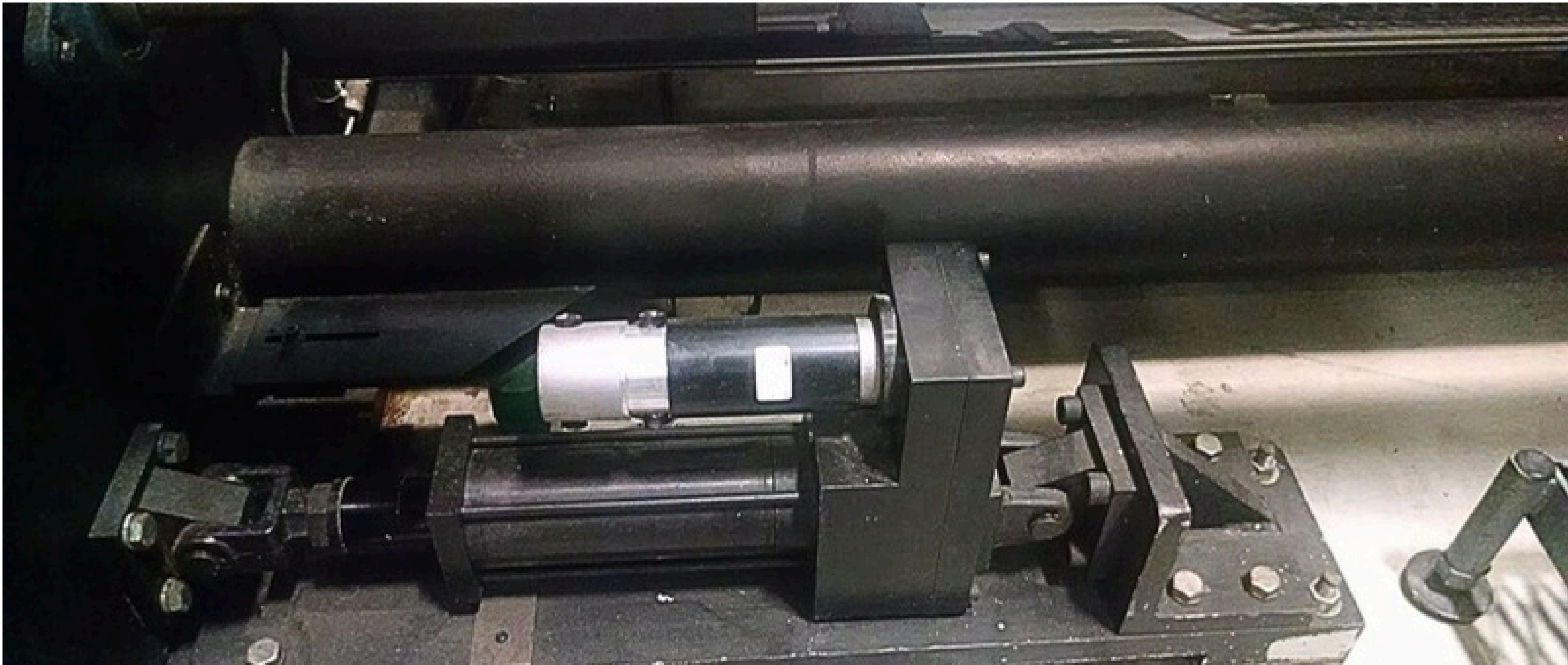


SPECIALIZING IN **CERTIFIED UL508A MANUFACTURING**





SPECIALIZING IN EDGE GUIDE CONTROLS





SPECIALIZING IN EXTRUDER TEMPERATURE CONTROLS





HMI SCREEN

EXTRUDER TEMPERATURE CONTROLS

